

**Applicant** : Laimi Electronic Technology (Shanghai ) Co., Ltd  
**Address** : Room 229, Building 5, No.518, Fengpu Road, Fengpu Industrial Park,  
Fengxian District, Shanghai

**The following sample(s) was/were submitted and identified on behalf of the client as:**

**Product Name** : Air Quality Detector  
**Model** : ECO-12 (main test), ECO-10, CO-8, ECO-6  
**Trademark** : ecofive  
**Manufacturer** : Laimi Electronic Technology (Shanghai ) Co., Ltd  
**Address** : Room 229, Building 5, No.518, Fengpu Road, Fengpu Industrial Park,  
Fengxian District, Shanghai

**Date of Sample Received** : Aug. 25, 2020  
**Test period** : Aug. 25, 2020 - Sept. 11, 2020

**Test requested**

In accordance with RoHS Directive 2011/65/EU and amendment 2015/863/EU, to determine Cadmium (Cd), Lead (Pb), Mercury (Hg), Chromium (Cr (VI)), PBBs/PBDEs, Di (2-ethyl hexyl)-phthalate (DEHP), Dibutyl phthalate (DBP), Butylbenzyl phthalate (BBP), Diisobutyl phthalate (DIBP) content on submitted samples.

**Test method** : Please refer to next page.

**Test result** : Please refer to next page.

**Tested by:***George Zhang*

George Zhang  
(Senior Engineer)

**Reviewed by:***Fred Wu*

Fred Wu  
(Supervisor)

**Approved by:***Caby Yang*

Caby Yang  
(Technical director)

**Date:**

Sept. 11, 2020



This document cannot be reproduced except in full, without prior written approval of NTEK. Any unauthorized alteration, forgery or falsification of the content or appearance of this document is unlawful and offenders may be prosecuted to the fullest extent of the law. Unless otherwise stated the results shown in this test report refer only to the sample(s) tested and such sample(s) are retained for 30 days only.

**Dongguan NTEK Testing Technology Co., Ltd.**

**Address:** Building 3, Meisaidaxin Park, Keji 8th Road, Songshan Lake High-Tech Industrial Development Zone,  
Dongguan, Guangdong, China

**Tel:** (+86-769) 23301666

**Fax:** (+86-769) 23301600

**Email:** service@ntek.org.cn

**http://www.dgntek.org.cn**

**Test method:****1. For the Cadmium (Cd), Lead (Pb), Mercury (Hg), Chromium (Cr (VI)), PBBs/ PBDEs:**

With reference to IEC 62321 Procedures for the Determination of Levels of Regulated Substances in Electrotechnical Products, XRF scanning first test, then using chemical test method to confirm.

Testing Item		Test Method	Measuring Instrument	MDL
Screening test		IEC 62321-3-1: 2013 scanning	XRF	--
Wet Chemical test	Lead (Pb)	IEC 62321-5: 2013	ICP-OES	2mg/kg
	Cadmium (Cd)	IEC 62321-5: 2013	ICP-OES	2mg/kg
	Mercury (Hg)	IEC 62321-4: 2013+AMD1:2017	ICP-OES	2mg/kg
	Chromium (Cr (VI))▼	IEC 62321-7-2:2017	UV-Vis	10mg/kg
		IEC 62321-7-1: 2015		0.10µg/cm <sup>2</sup>
	PBBs/PBDEs	IEC 62321-6: 2015	GC-MS	5 mg/kg

**2. For the DEHP, DBP, BBP and DIBP:**

Testing Item	Pretreatment Method	Measuring Instrument	MDL
Di (2-ethyl hexyl)-phthalate (DEHP)	IEC 62321-8: 2017	GC-MS	30mg/kg
Butylbenzyl phthalate (BBP)			30mg/kg
Dibutyl phthalate (DBP)			30mg/kg
Diisobutyl phthalate (DIBP)			30mg/kg

This document cannot be reproduced except in full, without prior written approval of NTEK. Any unauthorized alteration, forgery or falsification of the content or appearance of this document is unlawful and offenders may be prosecuted to the fullest extent of the law. Unless otherwise stated the results shown in this test report refer only to the sample(s) tested and such sample(s) are retained for 30 days only.

**Dongguan NTEK Testing Technology Co., Ltd.**

Address: Building 3, Meisaidaxin Park, Keji 8th Road, Songshan Lake High-Tech Industrial Development Zone,

Dongguan, Guangdong, China

Tel: (+86-769) 23301666

Fax: (+86-769) 23301600

Email: [service@ntek.org.cn](mailto:service@ntek.org.cn)

<http://www.dgntek.org.cn>

## 1. Description of the test subject:

Sample No.	Location	Sample Description
1	Shell	Transparent plastic screen
2	Shell	Double-sided adhesive
3	Shell	White plastic shell
4	Shell	Silver sticker
5	Shell	Creamy white plastic
6	Shell	Black plastic
7	Shell	Silver foil
8	Shell	Silver screw
9	Shell	Gold nut
10	Display screen	Display screen gray film
11	Display screen	Display screen glass screen
12	Display screen	Beige film
13	Display screen	Silver film
14	Display screen	Black foil
15	Display screen	Transparent film
16	Display screen	Transparent plastic sheet
17	Display screen	Milky white film
18	Display screen	White plastic frame
19	Display screen	Silver metal board
20	Display screen	FPC soft board
21	Display screen	SMD LED
22	Display screen	Gray cardboard
23	Green PCB board	Tact switch black plastic key-press
24	Green PCB board	Tact switch silver frame
25	Green PCB board	Tact switch silver shrapnel
26	Green PCB board	Tact switch pin
27	Green PCB board	Electrolytic capacitor black film
28	Green PCB board	Electrolytic capacitor aluminum shell

This document cannot be reproduced except in full, without prior written approval of NTEK. Any unauthorized alteration, forgery or falsification of the content or appearance of this document is unlawful and offenders may be prosecuted to the fullest extent of the law. Unless otherwise stated the results shown in this test report refer only to the sample(s) tested and such sample(s) are retained for 30 days only.

**Dongguan NTEK Testing Technology Co., Ltd.**

Address: Building 3, Meisaidaxin Park, Keji 8th Road, Songshan Lake High-Tech Industrial Development Zone,

Dongguan, Guangdong, China

Tel: (+86-769) 23301666

Fax: (+86-769) 23301600

Email: [service@ntek.org.cn](mailto:service@ntek.org.cn)

<http://www.dgntek.org.cn>

Sample No.	Location	Sample Description
29	Green PCB board	Electrolytic capacitor black rubber plug
30	Green PCB board	Electrolytic capacitor pin
31	Green PCB board	Interface silver metal frame
32	Green PCB board	Creamy white plastic seat
33	Green PCB board	Silver pin
34	Green PCB board	SMD tantalum capacitor
35	Green PCB board	SMD IC
36	Green PCB board	Black plastic seat
37	Green PCB board	SMD diode
38	Green PCB board	SMD audion
39	Green PCB board	SMD inductance
40	Green PCB board	SMD crystal diode
41	Green PCB board	Silver metal tube
42	Green PCB board	IC body
43	Green PCB board	SMD crystal oscillator
44	Green PCB board	SMD ceramic crystal oscillator
45	Green PCB board	SMD IC
46	Green PCB board	Sensor body
47	Green PCB board	Sensor pin
48	Green PCB board	Buzzer black plastic
49	Green PCB board	Buzzer pin
50	Green PCB board	SMD capacitor
51	Green PCB board	SMD resistance
52	Green PCB board	Green PCB board
53	Green PCB board	Solder of green PCB board
54	Green PCB board	Silver spring
55	Green PCB board	Black plastic terminal
56	Green PCB board	Gold pin
57	Green PCB board	SMD insurance
58	Green PCB board	SMD IC

This document cannot be reproduced except in full, without prior written approval of NTEK. Any unauthorized alteration, forgery or falsification of the content or appearance of this document is unlawful and offenders may be prosecuted to the fullest extent of the law. Unless otherwise stated the results shown in this test report refer only to the sample(s) tested and such sample(s) are retained for 30 days only.

**Dongguan NTEK Testing Technology Co., Ltd.**

Address: Building 3, Meisaidaxin Park, Keji 8th Road, Songshan Lake High-Tech Industrial Development Zone,

Dongguan, Guangdong, China

Tel: (+86-769) 23301666

Fax: (+86-769) 23301600

Email: [service@ntek.org.cn](mailto:service@ntek.org.cn)

<http://www.dgntek.org.cn>



Sample No.	Location	Sample Description
59	Green PCB board	Yellow plastic jacket
60	Green PCB board	Copper-colored cable core
61	Green PCB board	White plastic jacket
62	Green PCB board	Red plastic jacket
63	Green PCB board	Black plastic jacket
64	Green PCB board	SMD LED
65	Green PCB board	White plastic seat
66	Green PCB board	Silver plastic cover
67	Black PCB board	Beige soft rubber tube
68	Black PCB board	Sensor body
69	Black PCB board	SMD IC
70	Black PCB board	Capacitor gray plastic
71	Black PCB board	Capacitor pin
72	Black PCB board	Cylindrical crystal oscillator
73	Black PCB board	SMD crystal oscillator
74	Black PCB board	SMD crystal diode
75	Black PCB board	SMD IC
76	Black PCB board	SMD IC
77	Black PCB board	SMD IC
78	Black PCB board	Black PCB board
79	Black PCB board	Solder of black PCB board
80	Black PCB board	White dust net
81	Black PCB board	Black plastic
83	Fan assembly	Silver metal cover
84	Fan assembly	Black plastic box
85	Fan assembly	Silver long screws
86	Fan assembly	Silver spring
87	Fan assembly	Black plastic frame
88	Fan assembly	Sensor body

This document cannot be reproduced except in full, without prior written approval of NTEK. Any unauthorized alteration, forgery or falsification of the content or appearance of this document is unlawful and offenders may be prosecuted to the fullest extent of the law. Unless otherwise stated the results shown in this test report refer only to the sample(s) tested and such sample(s) are retained for 30 days only.

**Dongguan NTEK Testing Technology Co., Ltd.**

Address: Building 3, Meisaidaxin Park, Keji 8th Road, Songshan Lake High-Tech Industrial Development Zone,

Dongguan, Guangdong, China

Tel: (+86-769) 23301666

Fax: (+86-769) 23301600

Email: [service@ntek.org.cn](mailto:service@ntek.org.cn)

<http://www.dgntek.org.cn>

Sample No.	Location	Sample Description
89	Fan assembly	Silver sticker
90	Fan assembly	Black plastic frame
91	Fan assembly	Black plastic fan blades
92	Fan assembly	Silver metal ring
93	Fan assembly	Black soft magnetic ring
94	Fan assembly	Silver metal shaft
95	Fan assembly	Gold bearing
96	Fan assembly	Enamelled coil
97	Fan assembly	Silicon steel sheet
98	Fan assembly	SMD IC
99	Fan assembly	Green PCB board
100	Fan assembly	Solder of green PCB board
101	Fan assembly	Red plastic jacket
102	Fan assembly	Silver cable core
103	Fan assembly	Black plastic jacket
104	Fan assembly	Yellow plastic jacket
105	Wire	Red plastic jacket
106	Wire	Silver cable core
107	Wire	Black plastic jacket
108	Wire	Yellow plastic jacket
109	Wire	Green plastic jacket
110	Wire	Blue plastic jacket
111	Wire	White plastic jacket
112	Wire	Purple plastic jacket
113	Wire	Orange plastic jacket
114	Wire	White plastic terminal
115	Wire	Silver metal terminal
116	Battery	Silver sticker
118	Battery	Red plastic jacket
119	Battery	Black plastic jacket

This document cannot be reproduced except in full, without prior written approval of NTEK. Any unauthorized alteration, forgery or falsification of the content or appearance of this document is unlawful and offenders may be prosecuted to the fullest extent of the law. Unless otherwise stated the results shown in this test report refer only to the sample(s) tested and such sample(s) are retained for 30 days only.

**Dongguan NTEK Testing Technology Co., Ltd.**

Address: Building 3, Meisaidaxin Park, Keji 8th Road, Songshan Lake High-Tech Industrial Development Zone,

Dongguan, Guangdong, China

Tel: (+86-769) 23301666

Fax: (+86-769) 23301600

Email: [service@ntek.org.cn](mailto:service@ntek.org.cn)

<http://www.dgntek.org.cn>

## 2. Test results (Unit: mg/kg):

### 2.1 Test results of Cr (VI), Cd, Pb, Hg, PBBs, PBDEs:

No.	Test Method	Heavy Metals					Conclusion
		Cd	Pb	Hg	Cr (Cr (VI))	Br (PBBs/PBDEs)	
1	Screening	BL	BL	BL	BL	BL	Comply
2	Screening	BL	BL	BL	BL	BL	Comply
3	Screening	BL	BL	BL	BL	BL	Comply
4	Screening	BL	BL	BL	BL	BL	Comply
5	Screening	BL	BL	BL	BL	BL	Comply
6	Screening	BL	BL	BL	BL	BL	Comply
7	Screening	BL	BL	BL	BL	BL	Comply
8	Screening	BL	BL	BL	BL	N.A.	Comply
9	Screening	BL	OL 23638 See note (6)	BL	BL	N.A.	Comply
10	Screening	BL	BL	BL	BL	BL	Comply
11	Screening	BL	BL	BL	BL	BL	Comply
12	Screening	BL	BL	BL	BL	BL	Comply
13	Screening	BL	BL	BL	BL	BL	Comply
14	Screening	BL	BL	BL	BL	BL	Comply
15	Screening	BL	BL	BL	BL	BL	Comply
16	Screening	BL	BL	BL	BL	BL	Comply
17	Screening	BL	BL	BL	BL	BL	Comply
18	Screening	BL	BL	BL	BL	BL	Comply
19	Screening	BL	BL	BL	IN	N.A.	Comply
	Wet Chem.	---	---	---	Negative	---	
20	Screening	BL	BL	BL	BL	BL	Comply

This document cannot be reproduced except in full, without prior written approval of NTEK. Any unauthorized alteration, forgery or falsification of the content or appearance of this document is unlawful and offenders may be prosecuted to the fullest extent of the law. Unless otherwise stated the results shown in this test report refer only to the sample(s) tested and such sample(s) are retained for 30 days only.

**Dongguan NTEK Testing Technology Co., Ltd.**

Address: Building 3, Meisaidaxin Park, Keji 8th Road, Songshan Lake High-Tech Industrial Development Zone,

Dongguan, Guangdong, China

Tel: (+86-769) 23301666

Fax: (+86-769) 23301600

Email: [service@ntek.org.cn](mailto:service@ntek.org.cn)

<http://www.dgntek.org.cn>

# Test Report

Report No.: DGC200825012GE

Page 8 of 21

No.	Test Method	Heavy Metals					Conclusion
		Cd	Pb	Hg	Cr (V I)	Br (PBBs/PBDEs)	
21	Screening	BL	BL	BL	BL	BL	Comply
22	Screening	BL	BL	BL	BL	BL	Comply
23	Screening	BL	BL	BL	BL	BL	Comply
24	Screening	BL	BL	BL	BL	N.A.	Comply
25	Screening	BL	BL	BL	BL	N.A.	Comply
26	Screening	BL	BL	BL	BL	N.A.	Comply
27	Screening	BL	BL	BL	BL	BL	Comply
28	Screening	BL	BL	BL	BL	N.A.	Comply
29	Screening	BL	BL	BL	BL	BL	Comply
30	Screening	BL	BL	BL	BL	N.A.	Comply
31	Screening	BL	BL	BL	BL	N.A.	Comply
32	Screening	BL	BL	BL	BL	IN	Comply
	Wet Chem.	---	---	---	---	N.D.	
33	Screening	BL	BL	BL	BL	N.A.	Comply
34	Screening	BL	BL	BL	BL	BL	Comply
35	Screening	BL	BL	BL	BL	BL	Comply
36	Screening	BL	BL	BL	BL	IN	Comply
	Wet Chem.	---	---	---	---	N.D.	
37	Screening	BL	BL	BL	BL	BL	Comply
38	Screening	BL	BL	BL	BL	BL	Comply
39	Screening	BL	BL	BL	IN	BL	Comply
	Wet Chem.	---	---	---	N.D.	---	
40	Screening	BL	OL 9922 See note (7)	BL	BL	BL	Comply

This document cannot be reproduced except in full, without prior written approval of NTEK. Any unauthorized alteration, forgery or falsification of the content or appearance of this document is unlawful and offenders may be prosecuted to the fullest extent of the law. Unless otherwise stated the results shown in this test report refer only to the sample(s) tested and such sample(s) are retained for 30 days only.

**Dongguan NTEK Testing Technology Co., Ltd.**

Address: Building 3, Meisaidaxin Park, Keji 8th Road, Songshan Lake High-Tech Industrial Development Zone,

Dongguan, Guangdong, China

Tel: (+86-769) 23301666

Fax: (+86-769) 23301600

Email: [service@ntek.org.cn](mailto:service@ntek.org.cn)

<http://www.dgntek.org.cn>

No.	Test Method	Heavy Metals					Conclusion
		Cd	Pb	Hg	Cr (VI)	Br (PBBs/PBDEs)	
41	Screening	BL	OL 23109 See note (6)	BL	BL	N.A.	Comply
42	Screening	BL	BL	BL	BL	BL	Comply
43	Screening	BL	BL	BL	BL	N.A.	Comply
44	Screening	BL	OL 3173 See note (7)	BL	BL	BL	Comply
45	Screening	BL	BL	BL	BL	BL	Comply
46	Screening	BL	BL	BL	IN	N.A.	Comply
	Wet Chem.	---	---	---	Negative	---	
47	Screening	BL	BL	BL	BL	N.A.	Comply
48	Screening	BL	BL	BL	BL	IN	Comply
	Wet Chem.	---	---	---	---	N.D.	
49	Screening	BL	BL	BL	BL	N.A.	Comply
50	Screening	BL	BL	BL	BL	BL	Comply
51	Screening	BL	BL	BL	BL	BL	Comply
52	Screening	BL	BL	BL	BL	IN	Comply
	Wet Chem.	---	---	---	---	N.D.	
53	Screening	BL	BL	BL	BL	N.A.	Comply
54	Screening	BL	BL	BL	BL	N.A.	Comply
55	Screening	BL	BL	BL	BL	IN	Comply
	Wet Chem.	---	---	---	---	N.D.	
56	Screening	BL	BL	BL	BL	N.A.	Comply
57	Screening	BL	BL	BL	IN	BL	Comply
	Wet Chem.	---	---	---	N.D.	---	
58	Screening	BL	BL	BL	BL	BL	Comply
59	Screening	BL	BL	BL	BL	BL	Comply
60	Screening	BL	BL	BL	BL	N.A.	Comply

This document cannot be reproduced except in full, without prior written approval of NTEK. Any unauthorized alteration, forgery or falsification of the content or appearance of this document is unlawful and offenders may be prosecuted to the fullest extent of the law. Unless otherwise stated the results shown in this test report refer only to the sample(s) tested and such sample(s) are retained for 30 days only.

**Dongguan NTEK Testing Technology Co., Ltd.**

Address: Building 3, Meisaidaxin Park, Keji 8th Road, Songshan Lake High-Tech Industrial Development Zone,

Dongguan, Guangdong, China

Tel: (+86-769) 23301666

Fax: (+86-769) 23301600

Email: service@ntek.org.cn

http://www.dgntek.org.cn

No.	Test Method	Heavy Metals					Conclusion
		Cd	Pb	Hg	Cr (V I)	Br (PBBs/PBDEs)	
61	Screening	BL	BL	BL	BL	BL	Comply
62	Screening	BL	BL	BL	BL	BL	Comply
63	Screening	BL	BL	BL	BL	BL	Comply
64	Screening	BL	BL	BL	BL	BL	Comply
65	Screening	BL	BL	BL	BL	BL	Comply
66	Screening	BL	BL	BL	BL	BL	Comply
67	Screening	BL	BL	BL	BL	BL	Comply
68	Screening	BL	BL	BL	BL	N.A.	Comply
69	Screening	BL	BL	BL	BL	BL	Comply
70	Screening	BL	BL	BL	BL	IN	Comply
	Wet Chem.	---	---	---	---	N.D.	
71	Screening	BL	BL	BL	BL	N.A.	Comply
72	Screening	BL	BL	BL	BL	N.A.	Comply
73	Screening	BL	BL	BL	BL	N.A.	Comply
74	Screening	BL	OL 8517 See note (7)	BL	BL	BL	Comply
75	Screening	BL	BL	BL	BL	BL	Comply
76	Screening	BL	BL	BL	BL	BL	Comply
77	Screening	BL	BL	BL	BL	BL	Comply
78	Screening	BL	BL	BL	BL	IN	Comply
	Wet Chem.	---	---	---	---	N.D.	
79	Screening	BL	BL	BL	BL	N.A.	Comply
80	Screening	BL	BL	BL	BL	BL	Comply

This document cannot be reproduced except in full, without prior written approval of NTEK. Any unauthorized alteration, forgery or falsification of the content or appearance of this document is unlawful and offenders may be prosecuted to the fullest extent of the law. Unless otherwise stated the results shown in this test report refer only to the sample(s) tested and such sample(s) are retained for 30 days only.

**Dongguan NTEK Testing Technology Co., Ltd.**

Address: Building 3, Meisaidaxin Park, Keji 8th Road, Songshan Lake High-Tech Industrial Development Zone,

Dongguan, Guangdong, China

Tel: (+86-769) 23301666

Fax: (+86-769) 23301600

Email: [service@ntek.org.cn](mailto:service@ntek.org.cn)

<http://www.dgntek.org.cn>



No.	Test Method	Heavy Metals					Conclusion
		Cd	Pb	Hg	Cr (Cr(VI))	Br (PBBs/ PBDEs)	
81	Screening	BL	BL	BL	BL	BL	Comply
83	Screening	BL	BL	BL	IN	N.A.	Comply
	Wet Chem.	---	---	---	Negative	---	
84	Screening	BL	BL	BL	BL	BL	Comply
85	Screening	BL	BL	BL	IN	N.A.	Comply
	Wet Chem.	---	---	---	Negative	---	
86	Screening	BL	BL	BL	BL	N.A.	Comply
87	Screening	BL	BL	BL	BL	BL	Comply
88	Screening	BL	BL	BL	BL	N.A.	Comply
89	Screening	BL	BL	BL	BL	BL	Comply
90	Screening	BL	BL	BL	BL	IN	Comply
	Wet Chem.	---	---	---	---	N.D.	
91	Screening	BL	BL	BL	BL	IN	Comply
	Wet Chem.	---	---	---	---	N.D.	
92	Screening	BL	BL	BL	BL	N.A.	Comply
93	Screening	BL	BL	BL	BL	BL	Comply
94	Screening	BL	BL	BL	IN	N.A.	Comply
	Wet Chem.	---	---	---	Negative	---	
95	Screening	BL	OL 24653 See note (6)	BL	BL	N.A.	Comply
96	Screening	BL	BL	BL	BL	BL	Comply
97	Screening	BL	BL	BL	BL	N.A.	Comply
98	Screening	BL	BL	BL	BL	BL	Comply
99	Screening	BL	BL	BL	BL	IN	Comply
	Wet Chem.	---	---	---	---	N.D.	
100	Screening	BL	BL	BL	BL	N.A.	Comply

This document cannot be reproduced except in full, without prior written approval of NTEK. Any unauthorized alteration, forgery or falsification of the content or appearance of this document is unlawful and offenders may be prosecuted to the fullest extent of the law. Unless otherwise stated the results shown in this test report refer only to the sample(s) tested and such sample(s) are retained for 30 days only.

**Dongguan NTEK Testing Technology Co., Ltd.**

Address: Building 3, Meisaidaxin Park, Keji 8th Road, Songshan Lake High-Tech Industrial Development Zone,

Dongguan, Guangdong, China

Tel: (+86-769) 23301666

Fax: (+86-769) 23301600

Email: [service@ntek.org.cn](mailto:service@ntek.org.cn)

<http://www.dgntek.org.cn>

No.	Test Method	Heavy Metals					Conclusion
		Cd	Pb	Hg	Cr (Cr(VI))	Br (PBBs/ PBDEs)	
101	Screening	BL	BL	BL	BL	BL	Comply
102	Screening	BL	BL	BL	BL	N.A.	Comply
103	Screening	BL	BL	BL	BL	BL	Comply
104	Screening	BL	BL	BL	BL	BL	Comply
105	Screening	BL	BL	BL	BL	BL	Comply
106	Screening	BL	BL	BL	BL	N.A.	Comply
107	Screening	BL	BL	BL	BL	BL	Comply
108	Screening	BL	BL	BL	BL	BL	Comply
109	Screening	BL	BL	BL	BL	BL	Comply
110	Screening	BL	BL	BL	BL	BL	Comply
111	Screening	BL	BL	BL	BL	BL	Comply
112	Screening	BL	BL	BL	BL	BL	Comply
113	Screening	BL	BL	BL	BL	BL	Comply
114	Screening	BL	BL	BL	BL	BL	Comply
115	Screening	BL	BL	BL	BL	N.A.	Comply
116	Screening	BL	BL	BL	BL	BL	Comply
118	Screening	BL	BL	BL	BL	BL	Comply
119	Screening	BL	BL	BL	BL	BL	Comply

This document cannot be reproduced except in full, without prior written approval of NTEK. Any unauthorized alteration, forgery or falsification of the content or appearance of this document is unlawful and offenders may be prosecuted to the fullest extent of the law. Unless otherwise stated the results shown in this test report refer only to the sample(s) tested and such sample(s) are retained for 30 days only.

**Dongguan NTEK Testing Technology Co., Ltd.**

Address: Building 3, Meisaidaxin Park, Keji 8th Road, Songshan Lake High-Tech Industrial Development Zone,

Dongguan, Guangdong, China

Tel: (+86-769) 23301666

Fax: (+86-769) 23301600

Email: [service@ntek.org.cn](mailto:service@ntek.org.cn)

<http://www.dgntek.org.cn>

## 2.2 The test results of DEHP, DBP, BBP, DIBP:

Group No.	Part No.	Test Method	Phthalates				Conclusion
			DEHP	DBP	BBP	DIBP	
1	59+61+62	Wet Chem.	N.D.	N.D.	N.D.	N.D.	Comply
2	101+103+104	Wet Chem.	N.D.	N.D.	N.D.	N.D.	Comply
3	105+107+108	Wet Chem.	N.D.	N.D.	N.D.	N.D.	Comply
4	109+110+111	Wet Chem.	N.D.	N.D.	N.D.	N.D.	Comply
5	112+113	Wet Chem.	N.D.	N.D.	N.D.	N.D.	Comply
6	63+118+119	Wet Chem.	N.D.	300	N.D.	N.D.	Comply
7	2	Wet Chem.	N.D.	N.D.	N.D.	N.D.	Comply
8	4+89+116	Wet Chem.	N.D.	N.D.	N.D.	N.D.	Comply
9	1+3+5+ 6+16+18	Wet Chem.	N.D.	N.D.	N.D.	N.D.	Comply
10	23+32+36+ 48+55+65	Wet Chem.	N.D.	N.D.	N.D.	N.D.	Comply
11	66+70+81+ 84+87+90	Wet Chem.	N.D.	N.D.	N.D.	N.D.	Comply
12	91+114+52+ 78+99	Wet Chem.	N.D.	N.D.	N.D.	N.D.	Comply
13	10+12+13+ 14+15+17	Wet Chem.	N.D.	N.D.	N.D.	N.D.	Comply
14	21+64+80+ 93+96	Wet Chem.	N.D.	N.D.	N.D.	N.D.	Comply
15	7+20+22+ 27+29+67	Wet Chem.	N.D.	N.D.	N.D.	N.D.	Comply

### Remark:

- (1) While the test results were less than the one-half limits indicates the presence of Phthalates on the two tested areas and result were all be regarded as no conflict with the requirement;
- (2) While the test results were less than the one-third limits indicates the presence of Phthalates on the three tested areas and result were all be regarded as no conflict with the requirement;
- (3) While the test results were less than the one-fifth limits indicates the presence of Phthalates on the five tested areas and result were all be regarded as no conflict with the requirement;
- (4) While the test results were less than the one-sixth limits indicates the presence of Phthalates on the six tested areas and result were all be regarded as no conflict with the requirement.

This document cannot be reproduced except in full, without prior written approval of NTEK. Any unauthorized alteration, forgery or falsification of the content or appearance of this document is unlawful and offenders may be prosecuted to the fullest extent of the law. Unless otherwise stated the results shown in this test report refer only to the sample(s) tested and such sample(s) are retained for 30 days only.

**Dongguan NTEK Testing Technology Co., Ltd.**

Address: Building 3, Meisaidaxin Park, Keji 8th Road, Songshan Lake High-Tech Industrial Development Zone,

Dongguan, Guangdong, China

Tel: (+86-769) 23301666

Fax: (+86-769) 23301600

Email: service@ntek.org.cn

http://www.dgntek.org.cn

**Note:**

- (1) (a) It is the result on total Br while test PBBs/PBDEs by XRF, It is the result on total Cr while test Cr (VI) by XRF.
- (b) Results are obtained by XRF for primary screening and further chemical testing by ICP-OES (for Pb, Cd and Hg), UV-Vis (for Cr (VI)) and GC-MS (for PBBs, PBDEs) is recommended to be performed, if the concentration exceeds the below warning value according to IEC 62321-3-1:2013. (unit: mg/kg).

Element	Polymer	Metal	Composite Materials
Cd	$BL \leq (70 - 3\sigma) < X < (130 + 3\sigma) \leq OL$	$BL \leq (70 - 3\sigma) < X < (70 + 3\sigma) \leq OL$	$LOD < X < (150 + 3\sigma) \leq OL$
Pb	$BL \leq (700 - 3\sigma) < X < (1300 + 3\sigma) \leq OL$	$BL \leq (700 - 3\sigma) < X < (1300 + 3\sigma) \leq OL$	$BL \leq (500 - 3\sigma) < X < (1500 + 3\sigma) \leq OL$
Hg	$BL \leq (700 - 3\sigma) < X < (1300 + 3\sigma) \leq OL$	$BL \leq (700 - 3\sigma) < X < (1300 + 3\sigma) \leq OL$	$BL \leq (500 - 3\sigma) < X < (1500 + 3\sigma) \leq OL$
Cr	$BL \leq (700 - 3\sigma) < X$	$BL \leq (700 - 3\sigma) < X$	$BL \leq (500 - 3\sigma) < X$
Br	$BL \leq (300 - 3\sigma) < X$	--	$BL \leq (250 - 3\sigma) < X$

(c) The XRF screening test for RoHS elements –The reading may be different to the actual content in the sample be of non-uniformity composition.

(d) OL=Over Limit, BL=Below Limit, IN=Inconclusive, LOD= Limit of Detection;

This document cannot be reproduced except in full, without prior written approval of NTEK. Any unauthorized alteration, forgery or falsification of the content or appearance of this document is unlawful and offenders may be prosecuted to the fullest extent of the law. Unless otherwise stated the results shown in this test report refer only to the sample(s) tested and such sample(s) are retained for 30 days only.

**Dongguan NTEK Testing Technology Co., Ltd.**

Address: Building 3, Meisaidaxin Park, Keji 8th Road, Songshan Lake High-Tech Industrial Development Zone,

Dongguan, Guangdong, China

Tel: (+86-769) 23301666

Fax: (+86-769) 23301600

Email: [service@ntek.org.cn](mailto:service@ntek.org.cn)

<http://www.dgntek.org.cn>

(2) mg/kg=ppm=0.0001%, N.D.=Not detected(<MDL), MDL=Method Detection Limit,  
 “---”=Not conducted, “--”=Not regulated, “N.A.”=Not available.

(3)“▼” =Metal sample

a. The sample is positive for Cr (VI) if the Cr (VI) concentration is greater than 0.13  $\mu\text{g}/\text{cm}^2$ .

The sample coating is considered to contain Cr (VI) ;

b. The sample is negative for Cr (VI) if Cr (VI) concentration is less than 0.10  $\mu\text{g}/\text{cm}^2$ .

The coating is considered a non-Cr (VI) based coating ;

c. The result between 0.10  $\mu\text{g}/\text{cm}^2$  and 0.13  $\mu\text{g}/\text{cm}^2$  is considered to be inconclusive

- unavoidable coating variations may influence the determination ;

Information on storage conditions and production date of the tested sample is unavailable  
 and thus Cr (VI) results represent status of the sample at the time of testing.

(4) RoHS Requirement

Restricted substances	Limits
Lead (Pb)	0.1% (1000 ppm)
Cadmium (Cd)	0.01% (100 ppm)
Chromium(VI) (Cr (VI))	0.1% (1000 ppm)
Mercury (Hg)	0.1% (1000 ppm)
Polybrominated biphenyls (PBBs)	0.1% (1000 ppm)
Polybrominated diphenyl ethers (PBDEs)	0.1% (1000 ppm)
Di (2-ethyl hexyl)-phthalate (DEHP)	0.1% (1000 ppm)
Butylbenzyl phthalate (BBP)	0.1% (1000 ppm)
Dibutyl phthalate (DBP)	0.1% (1000 ppm)
Diisobutyl phthalate (DIBP)	0.1% (1000 ppm)

The above limits are reference with RoHS Directive 2011/65/EU and amendment 2015/863/EU.

(5) Specimens, which requested to determine Cadmium, Mercury and Lead Content, have been dissolved completely;

(6) In accordance with RoHS Directive (2011/65/EU) Annex III Exemption list 6(c),  
 the lead content in copper alloy is exempted up to 4 % by weight;

(7) In accordance with RoHS Directive (2011/65/EU) Annex III Exemption list 7(c),  
 the lead content in glass and ceramic of electronic components is exempted;

(8) The client declares only test the designated sample;

(9) No.2, No.53, No.101, No.103 and No.104 material are the retest sample.

(date of sample received: Sept. 09, 2020).

This document cannot be reproduced except in full, without prior written approval of NTEK. Any unauthorized alteration, forgery or falsification of the content or appearance of this document is unlawful and offenders may be prosecuted to the fullest extent of the law. Unless otherwise stated the results shown in this test report refer only to the sample(s) tested and such sample(s) are retained for 30 days only.

**Dongguan NTEK Testing Technology Co., Ltd.**

Address: Building 3, Meisaidaxin Park, Keji 8th Road, Songshan Lake High-Tech Industrial Development Zone,

Dongguan, Guangdong, China

Tel: (+86-769) 23301666

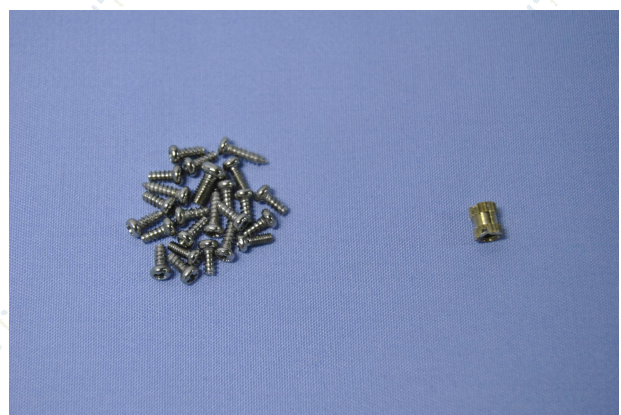
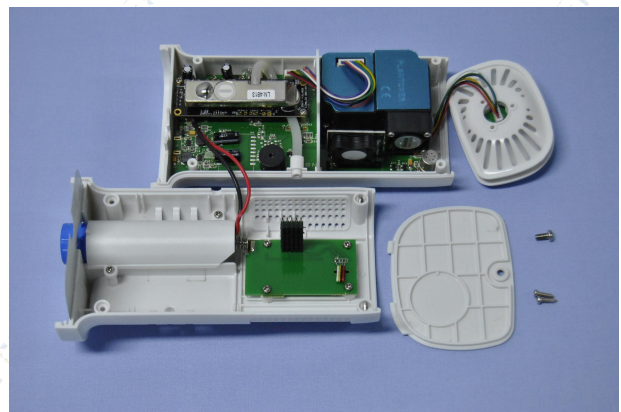
Fax: (+86-769) 23301600

Email: service@ntek.org.cn

http://www.dgntek.org.cn



## Photographs of Sample:



This document cannot be reproduced except in full, without prior written approval of NTEK. Any unauthorized alteration, forgery or falsification of the content or appearance of this document is unlawful and offenders may be prosecuted to the fullest extent of the law. Unless otherwise stated the results shown in this test report refer only to the sample(s) tested and such sample(s) are retained for 30 days only.

**Dongguan NTEK Testing Technology Co., Ltd.**

Address: Building 3, Meisaidaxin Park, Keji 8th Road, Songshan Lake High-Tech Industrial Development Zone,  
Dongguan, Guangdong, China

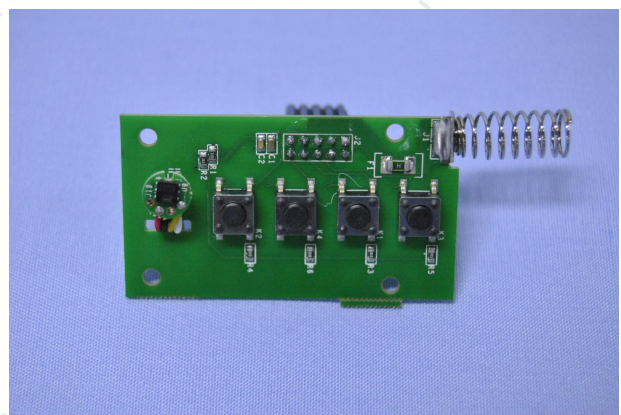
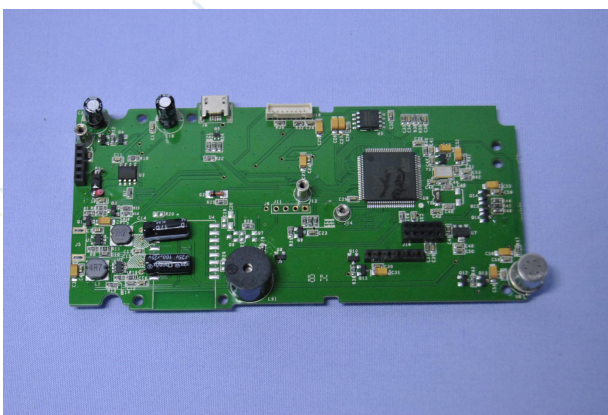
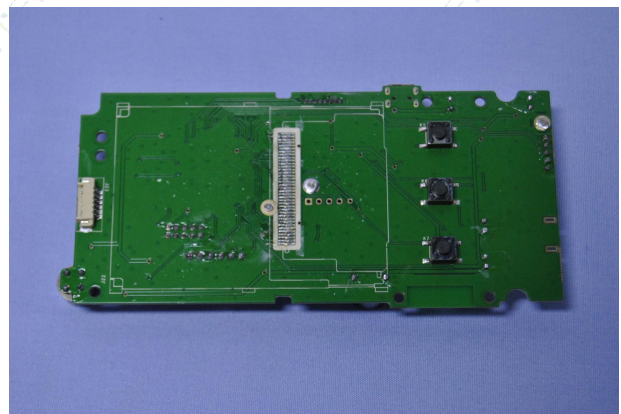
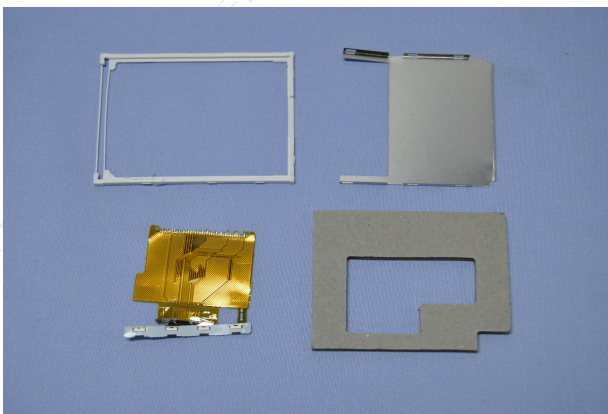
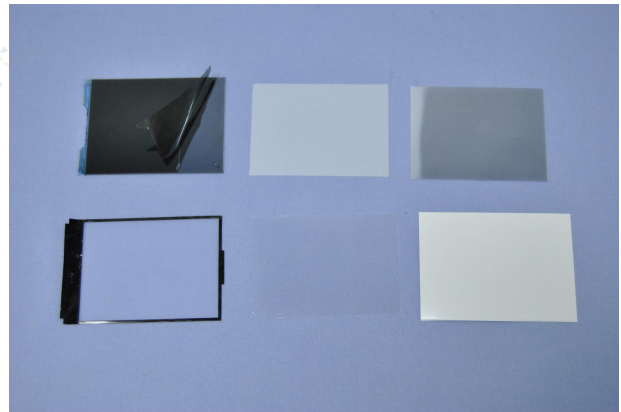
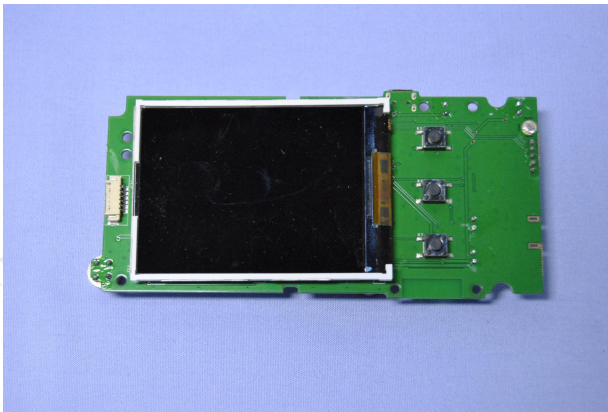
Tel: (+86-769) 23301666

Fax: (+86-769) 23301600

Email: [service@ntek.org.cn](mailto:service@ntek.org.cn)

<http://www.dgntek.org.cn>





This document cannot be reproduced except in full, without prior written approval of NTEK. Any unauthorized alteration, forgery or falsification of the content or appearance of this document is unlawful and offenders may be prosecuted to the fullest extent of the law. Unless otherwise stated the results shown in this test report refer only to the sample(s) tested and such sample(s) are retained for 30 days only.

**Dongguan NTEK Testing Technology Co., Ltd.**

Address: Building 3, Meisaidaxin Park, Keji 8th Road, Songshan Lake High-Tech Industrial Development Zone,  
Dongguan, Guangdong, China

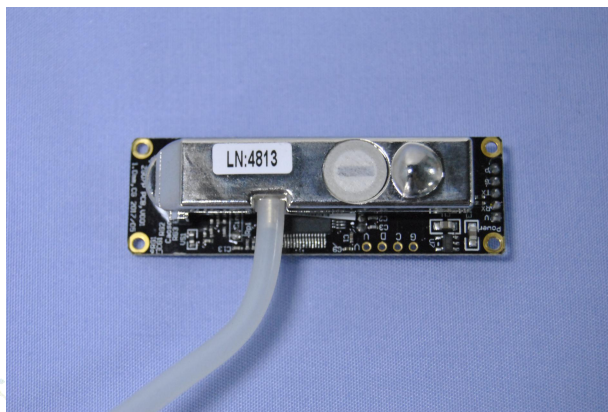
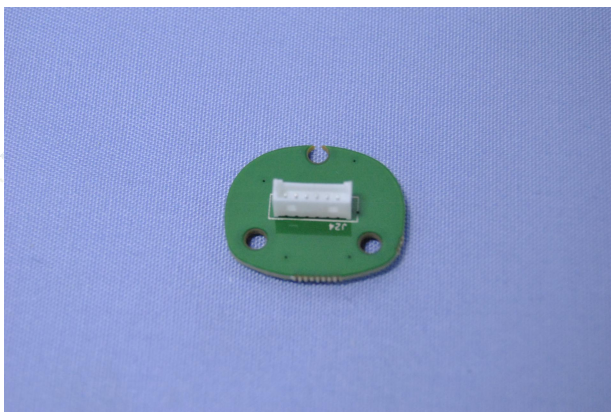
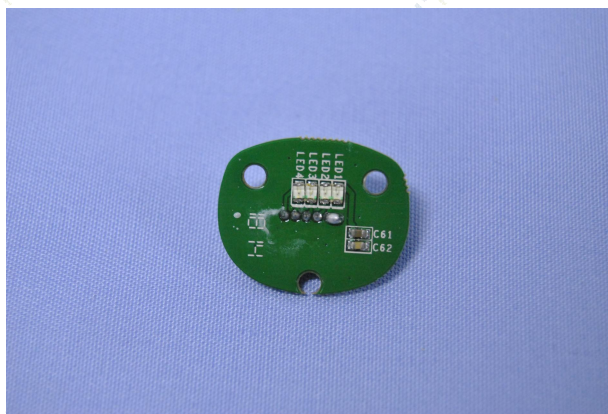
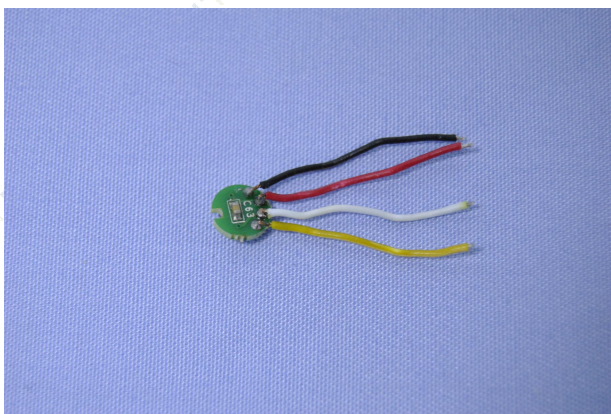
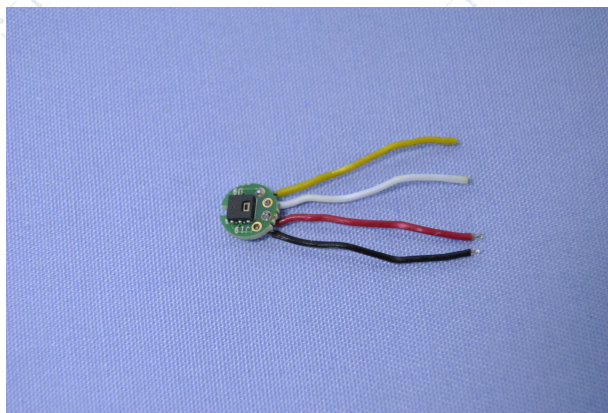
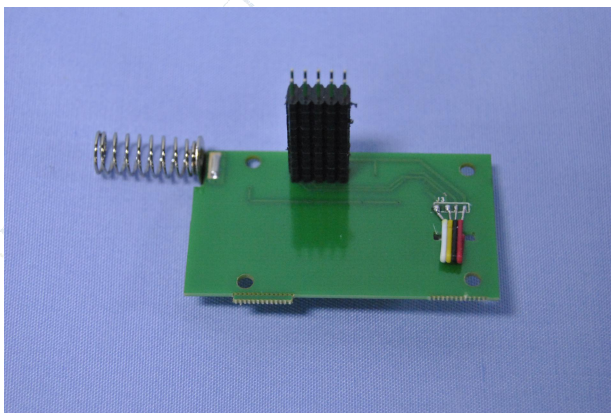
Tel: (+86-769) 23301666

Fax: (+86-769) 23301600

Email: [service@ntek.org.cn](mailto:service@ntek.org.cn)

<http://www.dgntek.org.cn>





This document cannot be reproduced except in full, without prior written approval of NTEK. Any unauthorized alteration, forgery or falsification of the content or appearance of this document is unlawful and offenders may be prosecuted to the fullest extent of the law. Unless otherwise stated the results shown in this test report refer only to the sample(s) tested and such sample(s) are retained for 30 days only.

**Dongguan NTEK Testing Technology Co., Ltd.**

Address: Building 3, Meisaidaxin Park, Keji 8th Road, Songshan Lake High-Tech Industrial Development Zone,  
Dongguan, Guangdong, China

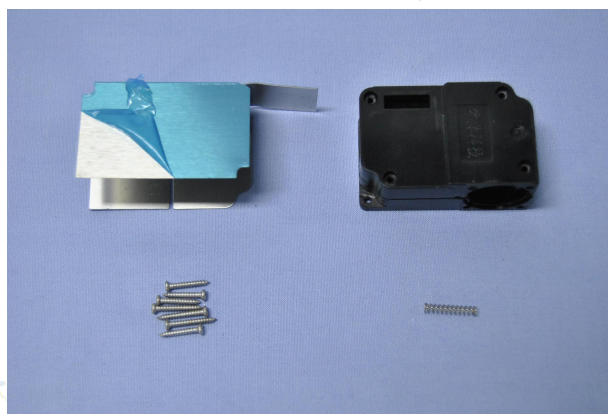
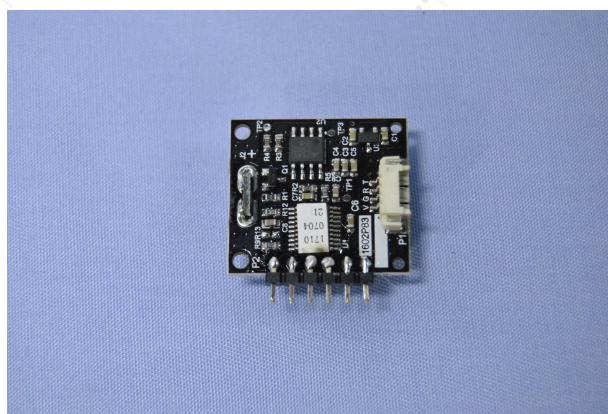
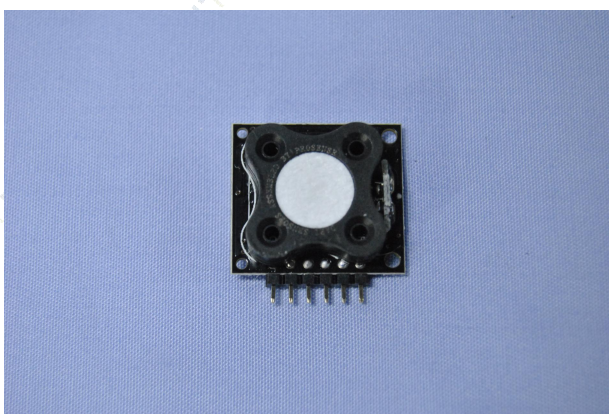
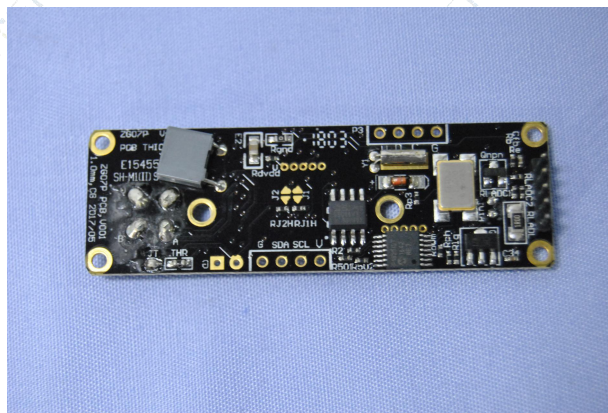
Tel: (+86-769) 23301666

Fax: (+86-769) 23301600

Email: [service@ntek.org.cn](mailto:service@ntek.org.cn)

<http://www.dgntek.org.cn>





This document cannot be reproduced except in full, without prior written approval of NTEK. Any unauthorized alteration, forgery or falsification of the content or appearance of this document is unlawful and offenders may be prosecuted to the fullest extent of the law. Unless otherwise stated the results shown in this test report refer only to the sample(s) tested and such sample(s) are retained for 30 days only.

**Dongguan NTEK Testing Technology Co., Ltd.**

Address: Building 3, Meisaidaxin Park, Keji 8th Road, Songshan Lake High-Tech Industrial Development Zone,  
Dongguan, Guangdong, China

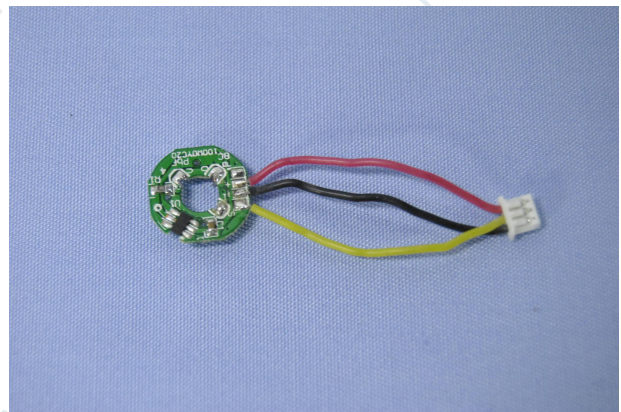
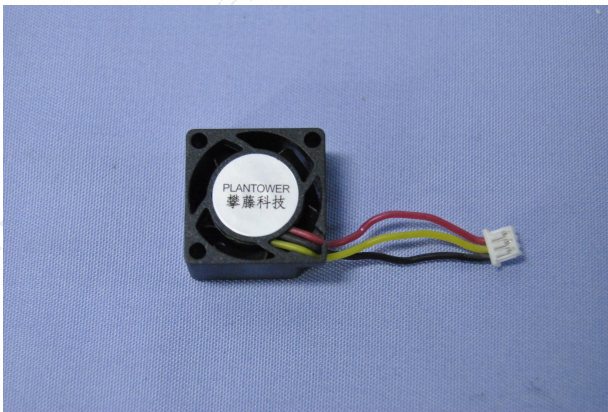
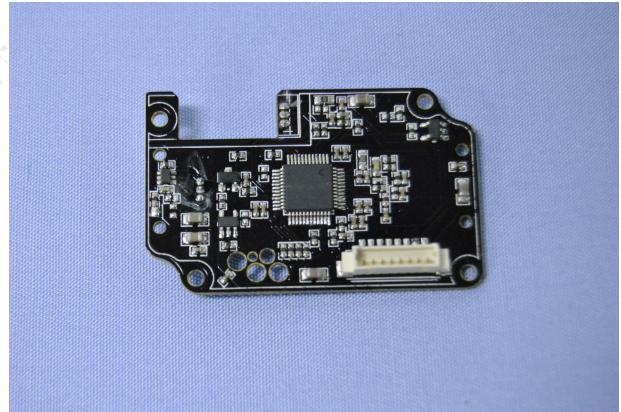
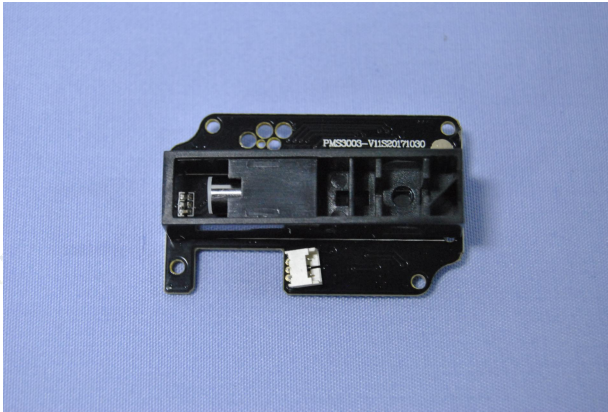
Tel: (+86-769) 23301666

Fax: (+86-769) 23301600

Email: [service@ntek.org.cn](mailto:service@ntek.org.cn)

<http://www.dgntek.org.cn>





This document cannot be reproduced except in full, without prior written approval of NTEK. Any unauthorized alteration, forgery or falsification of the content or appearance of this document is unlawful and offenders may be prosecuted to the fullest extent of the law. Unless otherwise stated the results shown in this test report refer only to the sample(s) tested and such sample(s) are retained for 30 days only.

**Dongguan NTEK Testing Technology Co., Ltd.**

Address: Building 3, Meisaidaxin Park, Keji 8th Road, Songshan Lake High-Tech Industrial Development Zone,  
Dongguan, Guangdong, China

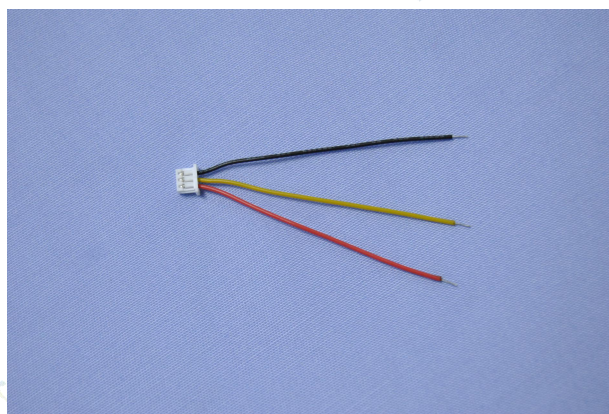
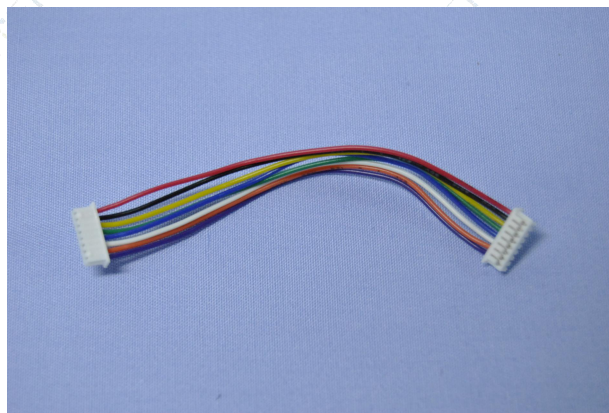
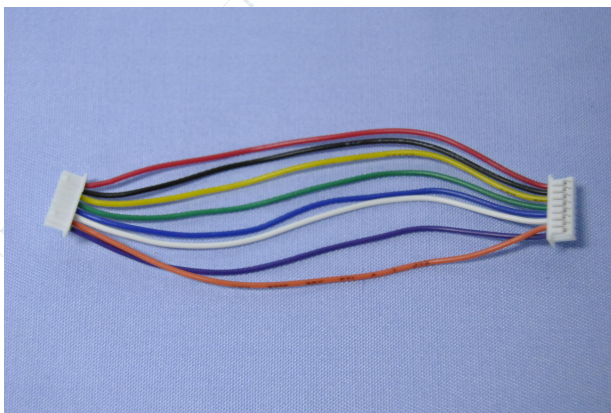
Tel: (+86-769) 23301666

Fax: (+86-769) 23301600

Email: [service@ntek.org.cn](mailto:service@ntek.org.cn)

<http://www.dgntek.org.cn>





\*\*\*End of Report\*\*\*

This document cannot be reproduced except in full, without prior written approval of NTEK. Any unauthorized alteration, forgery or falsification of the content or appearance of this document is unlawful and offenders may be prosecuted to the fullest extent of the law. Unless otherwise stated the results shown in this test report refer only to the sample(s) tested and such sample(s) are retained for 30 days only.

**Dongguan NTEK Testing Technology Co., Ltd.**

Address: Building 3, Meisaidaxin Park, Keji 8th Road, Songshan Lake High-Tech Industrial Development Zone,  
Dongguan, Guangdong, China

Tel: (+86-769) 23301666

Fax: (+86-769) 23301600

Email: [service@ntek.org.cn](mailto:service@ntek.org.cn)

<http://www.dgntek.org.cn>